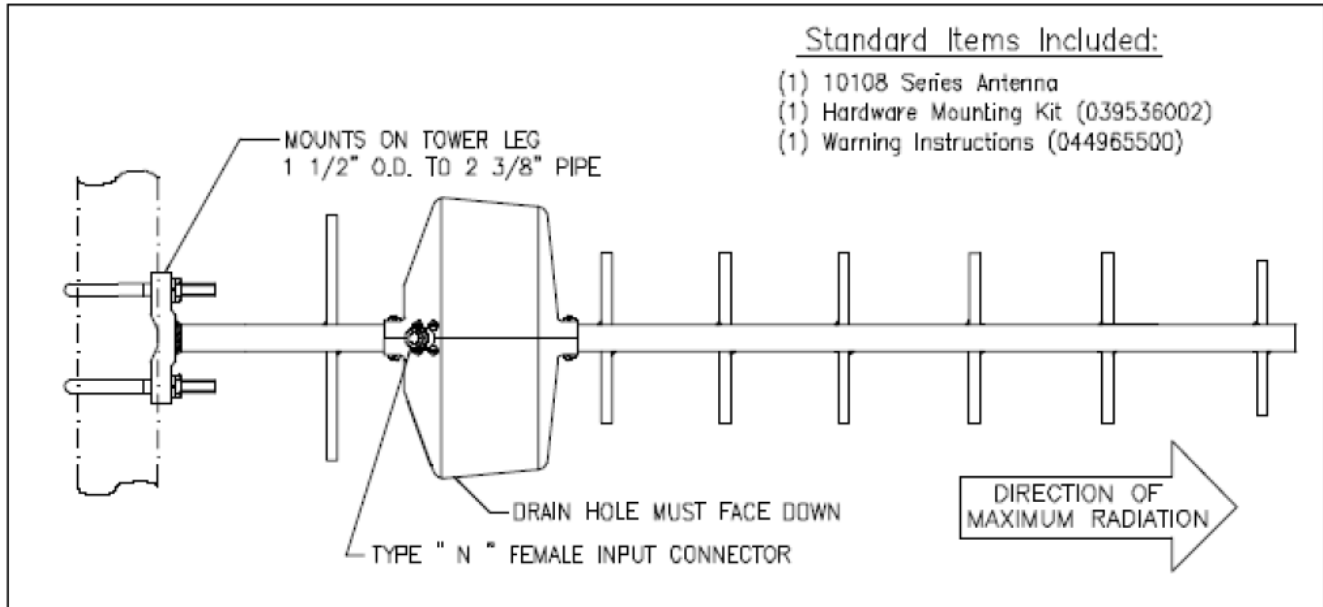


FIELD ASSEMBLY INSTRUCTIONS

10108 ANTENNA

READ ALL INSTRUCTIONS CAREFULLY BEFORE STARTING INSTALLATION

NOTE: Assemble work on the ground before raising antenna to the tower.



Installation Instructions

1. After removing the antenna from its shipping carton, inspect the contents to be sure that all parts are present. Check the antenna label to verify that you received the appropriate operating frequency for your antenna.
2. The antenna is supplied with a type N female fixed termination. Check the RF feed line cable termination type to determine if it can be directly fitted to the antenna's fixed termination. If a type N male termination is needed install a jumper cable (not supplied) before raising the antenna, connecting it directly to the antenna's fixed termination.
3. Mate the RF feed cable to the antenna input connector securely. NOTE: If a jumper cable is used, pull the weatherproof housing over the connector assembly. Put a loop in the feed cable to decrease the stress from water and ice buildup.
4. Raise antenna exercising caution. Refer to warning sheet (044965500). Do not cause damage to the antenna or other objects it may contact. Position and clamp to tower mast support pipe with "U" bolts supplied. Tighten nuts on U-bolts to 10 – 12 ft-lbs each side of the U-bolts. Make sure that they are gradually and evenly torqued. Use a level to ensure that the antenna does not lean.
5. When installation is completed make sure all mechanical connections are secured. For connectors use a nylon jaw pliers, tighten until connector slips.
6. Keep this instruction sheet in a safe place for future reference. REMEMBER, when dismantling the antenna use similar cautions – THE SAME ELECTRICAL HAZARDS EXIST. If you are in doubt -GET PROFESSIONAL ASSISTANCE.

REMINDER: SAFETY FIRST!



Northeast Quality Service
U.S. Headquarters
14 Alcap Ridge
Cromwell, CT 06416

Phone: 860.632.7242
Fax: 560.632.7220